

## TIPS & INFORMATION

### GUEST RELATIONS

Please visit Guest Relations located inside City Hall for:

- Questions and Concerns
- Ticket Upgrades
- Separated Guest Assistance
- Lost and Found
- Services for Guests with Disabilities



Services for International Guests are available at Guest Relations.

Los Servicios para huéspedes internacionales están disponibles en la oficina de Guest Relations.

Des services pour les visiteurs internationaux sont disponibles au Guest Relations.

Serviços para visitantes internacionais estão disponíveis no Guest Relations.

Dienste für internationale Gäste sind bei der Guest Relations erhältlich.

ゲストリレーションにて世界各国からのゲストの皆様向けのサービスをご案内しております。



Please look for the recycling containers throughout the Park and join us in our commitment to the environment.



Please do not feed the birds or other animals, and do not throw objects (including coins) into the water.

**LEAVING THE PARK?** All Guests who wish to leave the Park and return later in the day may do so by presenting their original admission media.

- To get to the **Magic Kingdom® Park parking lot**, take a Monorail or Ferryboat to the Transportation and Ticket Center and then a Parking Tram.
- To get to **Epcot®**, take a Monorail or Ferryboat to the Transportation and Ticket Center and then a Monorail to *Epcot*.
- To get to **Disney's Hollywood Studios®** or **Disney's Animal Kingdom® Theme Park**, take a Bus located outside the front of the Park.
- To get to the **Disney Springs™**, take Resort Transportation to any *Disney Resort* hotel, and then another Bus to the *Disney Springs*.
- To get to **Disney's Typhoon Lagoon Water Park** before 2:00pm, take Resort Transportation to any *Disney Resort* hotel, and then a Bus to *Disney Springs* and *Disney's Typhoon Lagoon Water Park*. After 2:00pm, take a Monorail or Ferryboat to the Transportation and Ticket Center and then a Monorail to *Epcot*. Once at *Epcot*, take a Bus to *Disney's Typhoon Lagoon Water Park*.
- To get to **Disney's Blizzard Beach Water Park**, take Resort Transportation to any *Disney Resort* hotel, and then a Bus to *Disney's Blizzard Beach Water Park*.
- To get to **Disney's Polynesian Village Resort** or **Disney's Grand Floridian Resort & Spa**, take the Resort Monorail or Watercraft Service.
- To get to **Disney's Contemporary Resort** take the Resort Monorail or the designated walking path.
- For **Disney's Wilderness Lodge**, take Watercraft Service or a Bus. For **Disney's Fort Wilderness Resort & Campground**, take Watercraft Service.
- To get to all other *Disney Resort* hotels, take a Bus located outside the front of the Park.

### PARK RULES

To provide a comfortable, safe, and enjoyable experience for our Guests, please comply with Park rules, signs and instructions including:

- All bags are subject to inspection prior to admission.
- Proper attire is required.
- Smoking is allowed only in designated areas.
- Weapons are strictly prohibited.

Additional details and a complete listing of Park rules are available at Guest Relations or [www.disneyworld.com/parkrules](http://www.disneyworld.com/parkrules).



### DISNEY WILD ABOUT SAFETY® TIPS

As Timon and Pumbaa would say, "Watch over your herd!" Download the Disney Wild About Safety mobile app or visit [www.disneywildaboutsafety.com](http://www.disneywildaboutsafety.com) for more safety tips and fun games.



## Capture every moment from under the sea to Space Mountain®

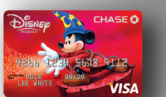
*Disney PhotoPass®* Service lets you capture your vacation memories in great photos – and get everyone in the shot! When you purchase Memory Maker you get unlimited digital downloads of all your memories, including select attraction photos and video, plus extras like Animated Magic Shots. All for one price!

Purchase Memory Maker today at Box Office Gifts on Main Street, U.S.A.® (inside Town Square Theater).

©Disney  
Memory Maker includes photos taken during the Memory Maker window and linked to the Memory Maker guest's Disney account. A Magic Band is required to receive certain attraction photos and other digital content. Photos and other digital content will expire pursuant to the expiration policy at <https://mydisneyphotopass.disney.go.com/help-and-support>. Valid theme park admission required for certain photo locations. Memory Maker is subject to Memory Maker terms and, if applicable, Family & Friends terms at <http://disneyworld.disney.go.com/media/park-experience-terms-and-conditions.html>. Not responsible for missing, lost or damaged photos.



Look for the *Disney Vacation Club* icon on your map.



### Payment Options

*Walt Disney World®* Resort accepts Disney Visa® Cards, *Disney Rewards®* Redemption Card, Disney Gift Card, Visa®, MasterCard®, Discover®, American Express®, Diners Club®, JCB®, traveler's checks, cash and Disney Dollars.

English

## GUIDEMAP

# Magic Kingdom



Move it! Shake it! Dance and Play it!

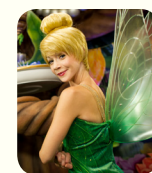


Download the *My Disney Experience* app from an app store or by scanning this code to access real-time Park information (details inside). Or visit [MyDisneyExperience.com](http://MyDisneyExperience.com) on your mobile browser.

Follow @WDWToday and Tweet with us!

# Fantasy Reigns

### ENTERTAINMENT



**MEET TINKER BELL AT TOWN SQUARE THEATER FP+**  
Spend some time with your favorite pint-sized pixie when you magically shrink down to the size of a fairy and enter this beautiful setting filled with a collection of Tink's treasures!

### MAIN STREET ELECTRICAL PARADE FP+

Delight in this legendary parade of glowing, spinning, gliding floats filled with your favorite Disney Characters and dancers. Performed on select nights. See *Times Guide*.

### WISHES NIGHTTIME SPECTACULAR FP+

Presented by **PANDORA Jewelry**  
Make a wish as the voices of beloved Disney Characters narrate this spectacular fireworks show that can be seen throughout the entire Park! See *Times Guide*.



### CELEBRATE THE MAGIC

At night, keep your eyes on Cinderella Castle to relive the artistry and music of some favorite Disney stories. With help from Tinker Bell and her pixie dust, Cinderella Castle transforms into a spectacular piece of art, making it the backdrop for a stunning, immersive journey. See *Times Guide*.

### SHOPPING

Throughout *Magic Kingdom®* Park, you'll find unique shopping experiences. From apparel and toys, to embroidered Mickey Ear hats, to Cinderella Castle and Monorail play sets, you can always remember the magic.

### MERCHANDISE PACKAGE DELIVERY AND PICKUP

Instead of carrying your purchases all day, have them delivered to the Main Street Chamber of Commerce near the Park entrance and pick them up as you exit the Park. Please allow three hours for delivery to the front of the Park. If you prefer, have your purchases delivered directly to your *Disney Resort* hotel. See a *Merchandise Cast Member* for more details.

### DINING

#### DINING RESERVATIONS

Table-Service restaurants book quickly, so please make reservations at [www.disneyworld.com/dine](http://www.disneyworld.com/dine), by calling 407-WDW-DINE (939-3463) or by visiting any Guest Relations location. *Most reservations must be canceled at least one day prior to the date of your reservation or a per person cancellation charge will be incurred (policies and charges varies by location; please confirm before finalizing your reservation).*

#### MICKEY CHECK

Look for the Mickey Check on menus throughout the *Walt Disney World®* Resort for kids' meals and other items that meet Disney Nutrition Guidelines. For more information, please visit [www.disneymickeycheck.com](http://www.disneymickeycheck.com).

For special dietary needs, please see a restaurant manager or chef.



### Don't Forget Your Times Guide!

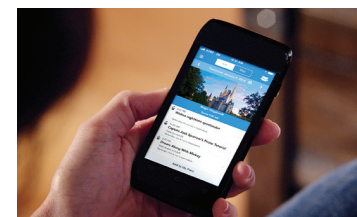
Pick up the *Times Guide* to get additional information regarding shows, entertainment, operating hours and even character appearances!

- Entertainment, outdoor shows and other Guest offerings are subject to change without notice.
- Theater venues have limited capacity and may fill up before show time. Please ensure your entire party is together prior to entering the facility.
- Some walkways in the Park may close periodically.

# Select, Reserve, Go, Repeat!

## Save time with DisneyFastPass+

With *Disney FastPass+®* service, you can reserve access to some must-do fun and even make changes on the go with the *My Disney Experience* app\*\*.



Select up to three *Disney FastPass+* experiences in one Theme Park per day.



Head to your chosen *FastPass+* experience entrances with your *MagicBand* or card during your designated arrival windows.



Visit a *FastPass+* kiosk after you redeem your initial selections to reserve additional experiences.

To get started, download the *My Disney Experience* app for free or look for this icon on the map and go! **FP+**

You can also visit [MyDisneyExperience.com](http://MyDisneyExperience.com) on your mobile browser. Wi-Fi is available in most areas.

\*Valid Theme Park admission and online registration required. *Disney FastPass+* attractions and entertainment experiences, the number of selections you can make and available arrival windows are limited. \*\*Availability subject to handset limitations and features may vary by handset or service provider. Message, data and roaming rates may apply. Coverage not available everywhere. If you're under 18, get your parent's permission first.



MIX  
Paper from  
responsible sources  
FSC® C007828

**FP+ RESERVE ACCESS TO SOME OF YOUR MUST-DO FUN!**

Select up to three FastPass+ experiences by visiting a FastPass+ kiosk identified on the map with FP+. Once you redeem your initial selections, return for information about availability and selecting additional experiences.

**Complimentary Wi-Fi**  
Wi-Fi is available in most areas. Some attractions and shows may have limited availability.



**Main Street, U.S.A.®**

- Walt Disney World® Railroad** Ride to Frontierland® and Fantasyland®.
- City Hall** Guest Relations, Information and Lost and Found.
- Town Square Theater** Meet Mickey Mouse and Tinker Bell!
- Sorcerers of the Magic Kingdom** Search for clues throughout the Park to defeat the Disney Villains. *Interactive adventure. At your own pace. Additional starting location in Liberty Square.*
- Harmony Barber Shop** Call to make an appointment. 407-WDW-PLAY (939-7529).
- Tony's Town Square Restaurant** Italian cuisine, featuring pastas, seafood and salads.
- Main Street Bakery** Starbucks® espresso, Artisan breakfast sandwiches and house-made Disney pastries.
- Plaza Ice Cream Parlor** Hosted by Edy's® S \$ Hand-scooped ice cream and waffle-bowl sundaes.
- The Plaza Restaurant** Sandwiches, burgers and sundaes.
- Casey's Corner** Hosted by Coca-Cola® Specialty hot dogs and French fries.
- The Crystal Palace, A Buffet with Character** Character buffet. American cuisine. *Breakfast hosted by Kellogg's®.*
- Main Street Chamber of Commerce** Merchandise Package Pickup.
- Emporium** One-stop shopping destination for Disney Character gifts and Park souvenirs.

**ADVENTURELAND®**

- Swiss Family Treehouse** Explore the treehouse inspired by the classic Disney film.
- The Magic Carpets of Aladdin®** Fly high on a magic carpet above Adventureland.
- Walt Disney's Enchanted Tiki Room** Watch tropical birds and colorful flowers come to life.
- Jungle Cruise®** Set sail on a whimsical cruise through exotic rivers.
- Pirates of the Caribbean®** Embark on a voyage to a time when pirates ruled the seas.
- A Pirate's Adventure~Treasures of the Seven Seas** Discover mystic treasure in this self-guided quest through Adventureland! *Interactive adventure. At your own pace. See a Cast Member for assistance.*
- Sunshine Tree Terrace** Citrus swirl, slush and snacks.
- Aloha Isle** Hosted by Dole® Whip Soft-serve Ice Cream and fresh pineapple.

**Special Considerations for Attractions**  
**SAFETY:** Please abide by all safety warnings and notices.

- Supervise children at all times. Children under age 7 years must be accompanied by a person age 14 years or older.
- For your safety while on attractions, remain seated with hands, arms, feet and legs inside the vehicle. Supervise children.

**Physical considerations on designated attractions:**  
**WARNING!** For safety, you should be in good health and free from high blood pressure, heart, back or neck problems, motion sickness, or other conditions that could be aggravated by this adventure. Expectant mothers should not ride.

**LEGEND**

- Symbols on Map**
- Baby Care Center
  - Stroller Rentals
  - Wheelchair Rentals
  - Locker Rentals
  - Service Animal Relief Areas
  - Disney PhotoPass® Photographers
  - Memory Maker Sales Center
  - Nikon® Picture Spot
  - ATMs Presented by Chase
  - Automated External Defibrillators
  - Smoking Locations
- Park Information**
- Character Greetings
  - Disney Vacation Club® Information Center

**FRONTIERLAND**

- Splash Mountain®** 40"/102 cm. Enjoy a thrilling log flume ride based on "Song of the South."
- Walt Disney World Railroad** Ride a vintage train to Fantasyland and Main Street, U.S.A.
- Tom Sawyer Island** Brave this Mark Twain-inspired hideaway.
- Big Thunder Mountain Railroad®** 40"/102 cm. Ride through a gold-mining town on a runaway train.
- Country Bear Jamboree** Have a knee-slappin' time with these singing bears.
- Golden Oak Outpost** Specialty waffle fries and sweet potato nuggets. *Open seasonally.*
- Pecos Bill Tall Tale Inn and Cafe** Fajitas, burritos and rice bowls.
- Westward Ho S** Snacks and frozen lemonade.
- Frontier Trading Post** Disney Trading Pins and accessories.

**Liberty Square**

- Liberty Square Riverboat** Cruise the Rivers of America aboard the Liberty Belle.
- The Hall of Presidents** Behold all the U.S. Presidents on stage together. 22 minutes.
- Haunted Mansion®** Take a spine-tingling tour of this dark, haunted estate.
- The Diamond Horseshoe** Sandwiches and salads. *Open seasonally.*
- Liberty Tree Tavern** Hosted by Ocean Spray® Roast turkey, carved beef, sandwiches, salads and stuffing.
- Sleepy Hollow** Funnel cakes, ice cream and waffle sandwiches.
- Liberty Square Market** Hosted by Ocean Spray® Frozen beverages, fruit and snacks.
- Columbia Harbour House** Fish, shrimp, chicken, salads and sandwiches.

**Fantasyland**

- "It's a small world"®** Take a boat tour around the globe.
- Peter Pan's Flight®** Fly with Peter Pan aboard a magical ship.
- Mickey's PhilharMagic®** Get swept away in this 3-D movie.
- Prince Charming Regal Carrousel** Ride this classic attraction.
- Enchanted Tales with Belle** Enjoy an interactive story adventure featuring Belle, Lumiere and possibly even you.
- Princess Fairytale Hall** Meet Anna, Elsa, Cinderella and Rapunzel!
- Fairytale Garden** Encounter a fairytale friend in this garden setting.
- The Many Adventures of Winnie the Pooh** Travel through the Hundred Acre Wood in an oversized Hunny Pot.
- Mad Tea Party** Spin around and around in a giant teacup.
- Seven Dwarfs Mine Train** 38"/97 cm. Race and rock through a diamond mine on this family coaster. *Expectant mothers should not ride.*
- Under the Sea~Journey of The Little Mermaid** Descend below the waves for a splashy musical adventure.
- Ariel's Grotto** Meet The Little Mermaid in her retreat under the sea.
- Dumbo the Flying Elephant®** Ride your favorite flying elephant.
- Casey Jr. Splash 'N' Soak Station** Cool off in this whimsical water play area.
- Pete's Silly Sideshow** Meet Donald, Daisy, Goofy & Minnie!
- Walt Disney World Railroad** Ride a vintage train to Main Street, U.S.A. and Frontierland.
- The Barnstormer** 35"/89 cm. Take flight on this thrilling junior roller coaster. *Expectant mothers should not ride.*
- Pinocchio Village Haus** Burgers, chicken breast nuggets and salads.
- Cinderella's Royal Table** Character dining with Disney Princesses. American cuisine.
- The Friar's Nook** Artisan macaroni & cheese, hot dogs, potato chips and frozen beverages.
- Storybook Treats** Ice cream.
- Be Our Guest Restaurant** Burgers, sandwiches and salads. *Open seasonally.*

**Tomorrowland®**

- Tomorrowland Speedway** 32"/81 cm.; 54"/137 cm. to ride alone Take a ride in your very own hot rod.
- Space Mountain®** 44"/112 cm. Blast off on this coaster ride in the dark.
- Astro Orbiter®** Pilot your own spaceship high above Tomorrowland.
- Tomorrowland Transit Authority PeopleMover** Ride this emission-free mass transit system of the future.
- Walt Disney's Carousel of Progress** Travel through the 20th century to see how technology has improved our way of life.
- Buzz Lightyear's Space Ranger Spin®** Fire lasers to defeat Zurg in this shooting gallery-inspired game.
- Monsters, Inc. Laugh Floor®** Discover the power of laughter in this live comedy show.
- Stitch's Great Escape!** 40"/102 cm. Interact with a mischievous Stitch in this dark theater-in-the-round experience.
- Cosmic Ray's Starlight Café** Burgers, chicken breast nuggets, rotisserie chicken, sandwiches and salads.
- Auntie Gravity's Galactic Goodies** Ice cream, smoothies, sundaes and iced coffee.
- Cool Ship** Hosted by Coca-Cola® Turkey legs, snacks and beverages.
- The Lunching Pad** Hot dogs, pretzels and frozen Coca-Cola®.
- Tomorrowland Terrace Restaurant** Burgers, sandwiches and salads. *Open seasonally.*

**ENTERTAINMENT**

- Move It! Shake It! Dance & Play It! Street Party
  - Disney Festival of Fantasy Parade
  - Main Street Electrical Parade
  - Celebrate the Magic
  - Wishes nighttime spectacular Presented by PANDORA Jewelry
- Pick up a Times Guide for more information.

**Symbols in List**

- Attraction/Show Considerations**
- Guest Relations
  - FastPass+ experience
  - Physical Considerations
  - Minimum Height Requirement
  - May be frightening for children
  - Must be ambulatory
  - May remain in wheelchair/ECV
  - Must transfer from wheelchair/ECV
  - Must transfer to standard wheelchair
- Devices Available at Guest Relations**
- Must transfer to standard wheelchair, and then to ride vehicle
  - Reflective Captioning
  - Sign Language (available Mondays and Thursdays)
  - Automated External Defibrillators
  - Handheld Captioning
  - Video Captioning
  - Audio Description
- Shopping**

**Dining**

- All dining locations listed accept the Disney Dining plans.
- Reservations recommended. Call 407-WDW-DINE (939-3463).
- B** - Breakfast **L** - Lunch  
**D** - Dinner **S** - Snack
- \$** = \$14.99 and less per adult  
**\$5** = \$15-\$29.99 per adult  
**\$55** = \$30-\$59.99 per adult  
See [www.disneydiningpricinginfo.com](http://www.disneydiningpricinginfo.com) for pricing details.

\*Emergency services available by calling 911.